

SM8654 RFID card



INTRODUCTION:

UHF Chip :

EPCglobal Gen2 Tags

- Operating frequency: 860 - 960 MHz
- RF interface: ISO/IEC 18000-6C
- EEPROM
 - 96 bit EPC
 - 96 bit TID
- 512 User Memory
- 32bit Access and 32bit Kill passwords

APPLICATION:

- Secure admission control
- Membership and Loyalty programs
- Water-resistant and durable

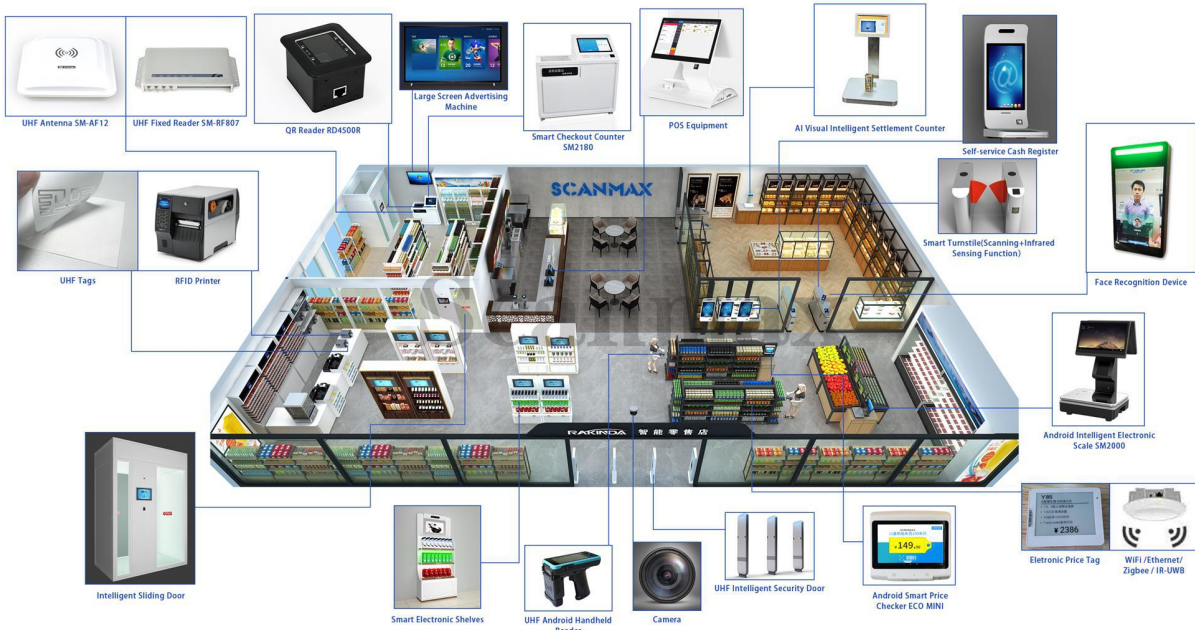
PERFORMANCE PARAMETERS

Card's size	85.5x54MM or customized
Thickness	0.84MM
Material:	Plastic
Chip	Alien H3

SCANMAX

TID
Surface
hole

With Unique TID
blank or with logo printing
cuzmized ID hole



BRANDS COOPERATIVE PARTNERS



中国移动通信
CHINA MOBILE



中国电信
CHINA TELECOM



中国联通
CHINA UNICOM



中国南方电网
CHINA SOUTHERN POWER GRID



中国烟草
CHINA TOBACCO



中国人寿
CHINA LIFE



中国石化
CHINA SINOPEC



中国石油



Tencent 腾讯



阿里巴巴·中国
china.alibaba.com



JD.COM 京东



苏宁易购
suning.com



FOXCONN
富士康科技集团



伟创力集团
FLEXTRONICS



北京大学
PEKING UNIVERSITY



北京建筑大学
BEIJING UNIVERSITY OF CIVIL
ENGINEERING AND ARCHITECTURE